

...per vedere se hai capito-Adesso tocca a te!



Ricopia la frase .Leggi.Inserisci correttamente le sillabe : TA- TE- TI-TO-TU

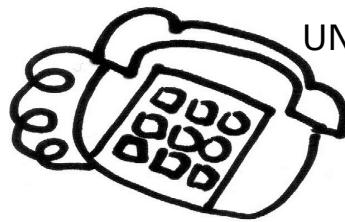
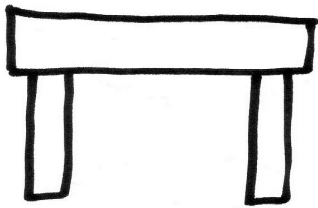
NELLA TANA CI SONO TALPA TONINA E TEA TOPOLINA

Empty boxes for syllable insertion: [] [] [] [] [] [] [] [] []



NELLA TANA CI SONO....

UNVOLO

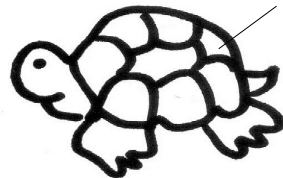


UNLEFONO

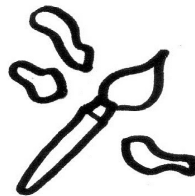
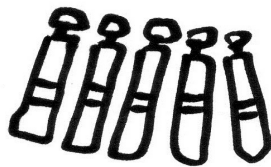
....RE 3
.....RTE



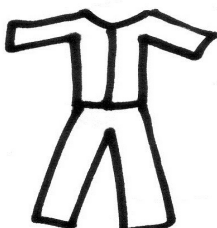
UNAR.....RUGA



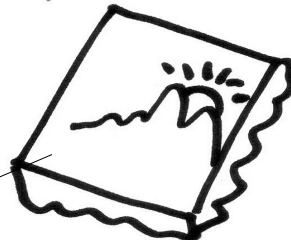
....BET.....



DIMPERA



E UNA
.....LA



DA PIT....RE !

UNA TU.....